

KES2023

KOREA ELECTRONICS SHOW

Shell Stand(Premium) Manual

2023.10.24 (Wed) – 10.27 (Fri) , COEX



SCHEDULE

List		Date	Remarks
Submission of Mandatory Forms		Sep 27, 2023 (Wed) 17:00	mkc@inaradesign.co.kr
Additional Item Ordering (Graphics, Furniture, etc.)		Oct 06, 2023 (Fri) 17:00	mkc@inaradesign.co.kr
Build-up	Hall A	Oct 21(Sat) ~ Oct 23(Mon) (08:00~20:00)	No exhibitors are allowed during the build-up period due to safety concerns.
	Hall B	Oct 22(Sun) ~ Oct 23(Mon) (08:00~20:00)	
Booth decoration (Display)	Hall A	Oct 23(Mon) (08:00~20:00)	<ul style="list-style-type: none"> Vehicles access to the venue will not be permitted after 15:00 on October 23, 2023.
	Hall B	Oct 23(Mon) (14:00~20:00)	
Power supply		Oct 23(Mon) (13:00 ~)	※ Depending on the situation, there might be delays.

SERVICES

■ Standard booth constructor

※ Overseas participants

Please contact us at the following email address for more information.

|주 나라디자인

nara

Vanessa Min

Tel. +82-2-557-0481 Fax. 02-557-0136

Email_ mkc@inaradesign.co.kr

Skype ID_ min.vanessa

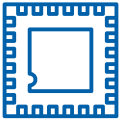


About booth graphics

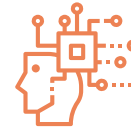


About booth options

Premium 2 Booth



전자부품소재관
Electronic parts / materials



테크솔루션관
Tech / Solutions



가전스마트홈관
Smart Living



융합신산업관
Future Promising Industry

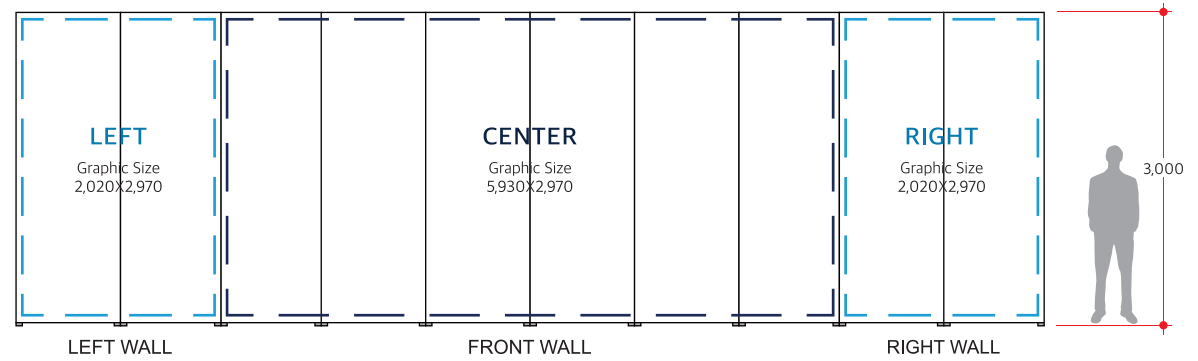


Premium 2 Booth



Perspective

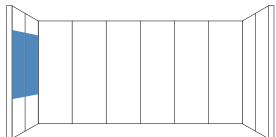
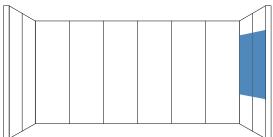
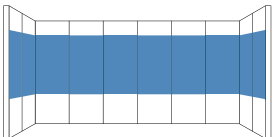
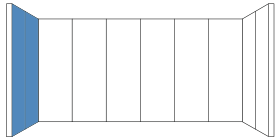

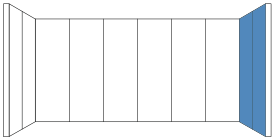

Booth Particulars		
1.Booth structure	Wooden system panel + Wooden structure	1set
2.Fascia lighting box	Company name / W: 2.5m X H: 0.8m	1pc
3.Booth nuber sign		1set
4.Information desk	W : 1.2m X H : 0.8m + Bar Stool	1set
5.Table Set	Table(1EA) + Design chair(4EA)	1set
6.Catalog Holder		1pc
7.Spot light	down light / Arm spot(10w)	3/5pc
8.Power socket	220V / 2Holes	1pc
9.Flooring(Pytex)	Fire resistant A-class W: 6m X D: 3m	18m ²
10.Electric power	220V (Single-phase)	2Kw



Extend Elevation

To use a specific color for your booth's point color instead of the current Section color, please inquire.
(Additional charges may apply for non-premade wallpaper colors.)

Premium 2 Booth Graphic option

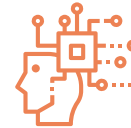
HEIGHT	LEFT	CENTER	RIGHT	FULL
1.5M(H)	1 GRAPHIC SIZE 2,020 X 1,500mm  PRINT/ INSTALLATION \$ 120	2 GRAPHIC SIZE 5,930 X 1,500mm  PRINT/ INSTALLATION \$ 360	3 GRAPHIC SIZE 2,020 X 1,500mm  PRINT/ INSTALLATION \$ 120	4 GRAPHIC SIZE 9,970 X 1,500mm  PRINT/ INSTALLATION \$ 600
	5 GRAPHIC SIZE 2,020 X 2,970mm  PRINT/ INSTALLATION \$ 240	6 GRAPHIC SIZE 5,930 X 2,970mm  PRINT/ INSTALLATION \$ 700	7 GRAPHIC SIZE 2,020 X 2,970mm  PRINT/ INSTALLATION \$ 240	8 GRAPHIC SIZE 9,970 X 2,970mm  PRINT/ INSTALLATION \$ 1,180

ADDITIONAL COSTS WILL BE INCURRED FOR THOSE OPTIONS.

Premium 4 Booth



전자부품소재관
Electronic parts / materials



테크솔루션관
Tech / Solutions



융합신산업관
Future Promising Industry



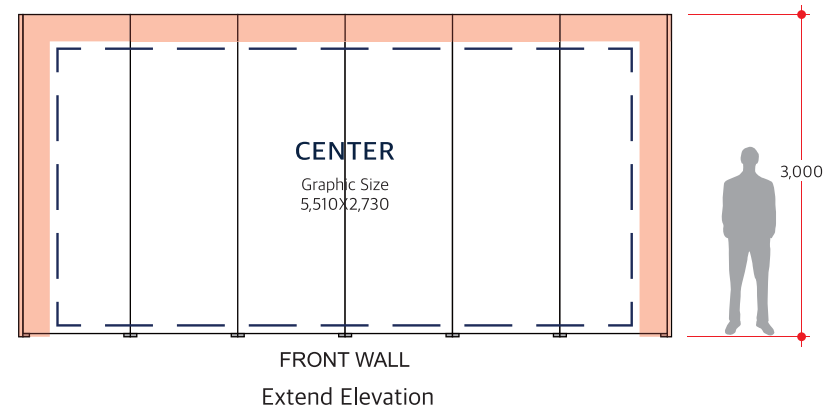
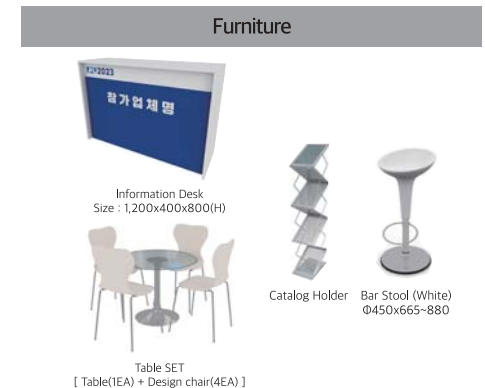
가전스마트홈관
Smart Living

Premium 4 Booth



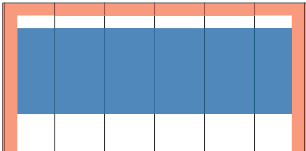

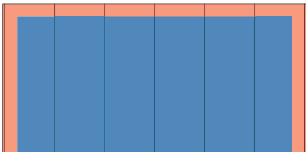

Perspective

Booth Particulars		
1.Booth structure	Wooden system panel + Wooden structure	1set
2.Fascia	Company name / W: 3.4m X H: 1m	1pc
3.Booth number sign		1pc
4.Information desk	W : 1.2m X H : 0.8m + Bar Stool	1set
5.Table Set	Table(1EA) + Design chair(4EA)	1set
7.Catalog Holder		1pc
7.Spot light	HQI(30w) / Arm spot (10w)/ down light	3/5/8pc
8.Power socket	220V / 2Holes	1pc
9.Flooring(Pytex)	Fire resistant A-class W: 6m X D: 6m	36m ²
10.Electric power	220V (Single-phase)	4Kw



To use a specific color for your booth's point color instead of the current Section color, please inquire.
(Additional charges may apply for non-premade wallpaper colors.)

Premium 4 Booth Graphic option

HEIGHT	CENTER
1.5M(H)	<div>1</div> <p>GRAPHIC SIZE 5,510 X 1,500mm</p>  <p>PRINT/ INSTALLATION \$ 300</p> <p> Graphic X</p>
3M(H)	<div>2</div> <p>GRAPHIC SIZE 5,510 X 2,730mm</p>  <p>PRINT/ INSTALLATION \$ 600</p> <p> Graphic X</p>

Display guide line

- Please read the booth instructions as required.

- In case of damage to the system panel, a restoration fee will be charged inevitably.
(Up to \$300 per panel)

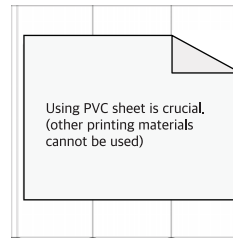
1

Adhesive printing (material: Adhesive PVC sheet)

→ It can be posted by paperhanger

PVC sheet is the printing material which is easy to remove.

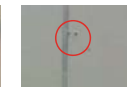
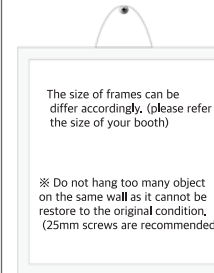
As other printing materials are not easy to remove,
using PVC sheet is essential.



2

Frames or any items, need to be hung on the wall

→Exhibitors can self-build with screws
(the size must be up to 25mm) (No Nail)



Not on the joints area



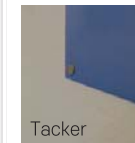
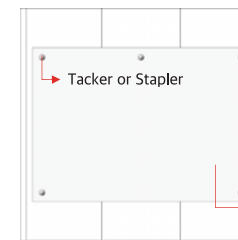
Not too many hangs on the same spot

3

Non-adhesive printing(banner, printouts etc.)

→ Exhibitor can be self-posted by tacker or stapler

※Staple must be removed after the show.



Tacker



Stapler

Tacker is better and easy to be used

4

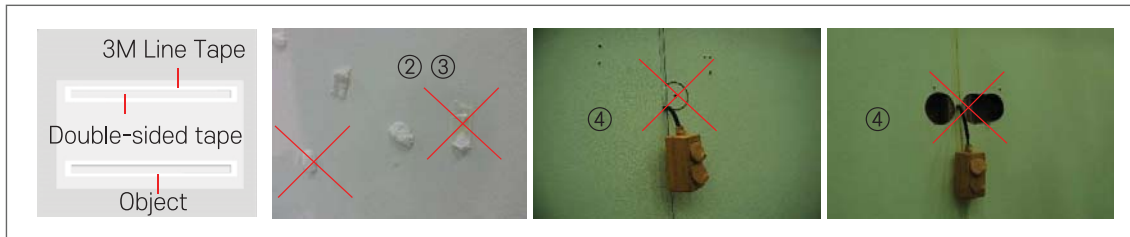
S ring, hanging rods or wire ring can be used to hang

→Exhibitors can self-hang items in the groove on the top of the wall by using wire rings.

(S ring and wire rings can be purchased at the hardware store)



Display guide line



① The construction material(wood wall) is a rental products which must be restore to the original condition after use

② Any superior adhesive strength product such as double-sided tape or super tape cannot be used.

(if you use a line tape from 3M company under the double-sided tape, it can be store to the original condition. Please use this method)

③ Any other high-strength adhesive such as glue gun or silicon are prohibited.

④ Any perforating actions except screw are prohibited.

⑤ if any damage occurs restoring fee will be charged.
(maximum \$315 per booth panel)

Wall-hanging TV installing methods

- Cables cannot be molded if you use laptop or any other electronics .
- This walls cannot be perforate for hiding cables or wires. It will be molded by wire molding rods with 3M Line tape

